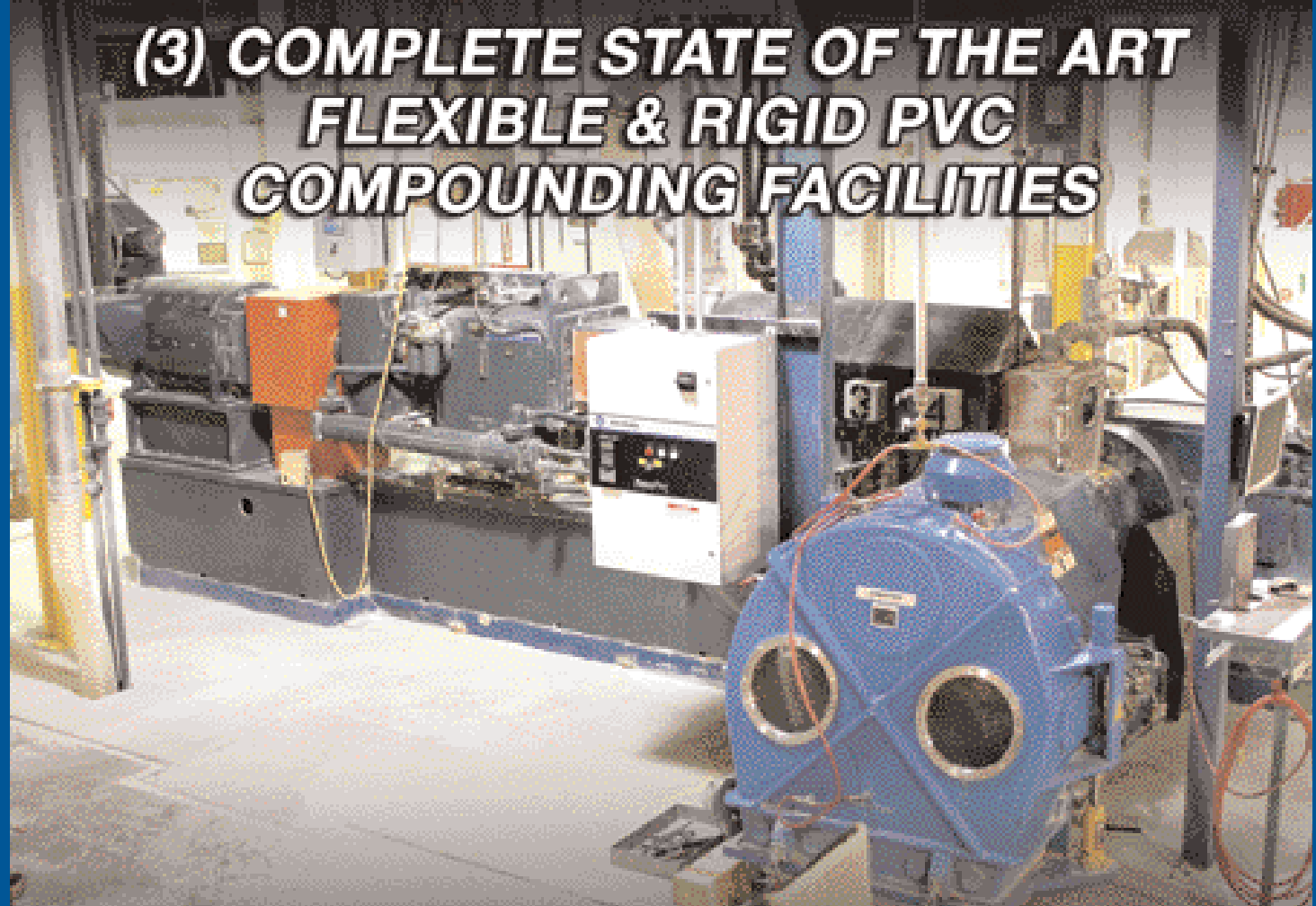
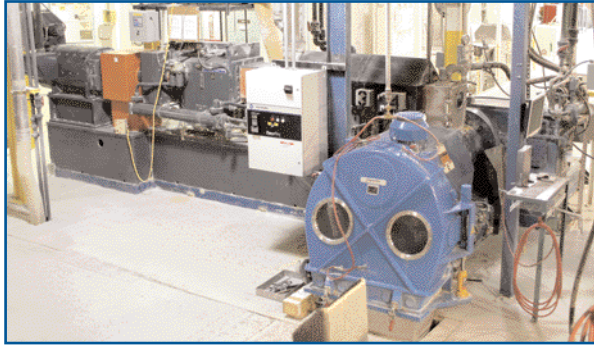


### **(3) COMPLETE STATE OF THE ART FLEXIBLE & RIGID PVC COMPOUNDING FACILITIES**



# EXTRUDER PELLETIZING LINES



WERNER & PFLEIDERER MODEL KP-92/250  
TWIN SCREW EXTRUDER



W&P/COPERION MODEL EGR-250 HOT  
FACE CUTTER PELLETIZER



DAVIS STANDARD THERMATIC MODEL 60IN60TP1H  
6" SINGLE SCREW EXTRUDER



DAVIS STANDARD LINE WATER THROUGH TABLE  
& BERINGER AIR WIPE DRYER

## EXTRUDER PELLETIZING LINES

*Lines may be sold bulk subject to the piecemeal bids*

- 1 - WERNER & PFLEIDERER EXTRUDER PELLETIZING LINE, INCLUDING:
  - (1) K TRON BELT FEEDER BLEND INFEED, DC Direct Drive Variable Speed
  - (1) SCHENCK ACCU RATE REGRIND FEEDER AUGER, With Programmable Feed Rate Control, PPE Vacuum Loader
  - (1) WERNER & PFLEIDERER MODEL KP-92/250 TWIN SCREW EXTRUDER, S/N 180978 (1997), 400-HP DC Drive, 3-1/2" Screws, 18.1 Ratio, 4-Zone Electric Band Heat, Liquid Cooled, T2-2X5000NM Gearbox, Closed Loop Oil System Gearbox, With Water Cooled Heat Exchanger, 400-HP Soft Start Drive, With 440 KVA Isolation Transformer, Transition Box Discharge, With Colt-On 7-1/2-HP Vacuum Pump System
  - (1) W&P PROCESS TECHNOLOGIES INC. MODEL 10000.250MM, 250mm 7:1 L/D Single Screw Extruder, S/N 2333-EXT (1997), 200-HP DC Drive, With Soft Start Drive & 220 KVA Isolation Transformer, Process Water Cooled Gearbox, 70" Screw, Electric Band Heat, Water Cooled
  - (1) W&P/COPERION MODEL EGR-250 HOT FACE CUTTER PELLETIZER, S/N 2050 2027 (2007), 36" Diameter 3-Blade Cutter Head, 11.0 KW Cutter Head Drive, With Allen Bradley Power Flex Programmable Frequency Drive Control, Die Plate, Floor Chute Discharge
  - (1) LIQUID RADIATOR COOLED FORCED AIR HEAT EXCHANGER
  - (1) GASHO ASSOCIATES 30-HP POSITIVE DISPLACEMENT BLOWER (Outside Roof Mounted)
  - (1) ROOF MOUNTED RECEIVER CYCLONE, Gravity Discharge
  - (1) W&P AIR BED DRYER, MODEL & S/N NA, Roof Mounted Ventra Pro Model E355/56-50 16.6 KW Blower, S/N 58606/1-98, Dryer Bed Size 21-1/2" x 9', Start-Up Bypass Valve, Roof Mounted Pellet Baghouse
  - (1) SWECO VIBRO-ENERGY MODEL X548C66, 48" VIBRATORY SEPARATOR/SIZER, S/N 752039A300, 2-1/2-HP, Stainless Steel, 2 Screen Decks, 1/4" Hole Top Screen, 3" Non-Perforated Center/2" Non-Perforated Outside, 10mm Wire Mesh Fines Screen
  - (1) FOX VENTURI, WITH 6" FORCED AIR BLOWPIPE & GASHO ASSOCIATES 30-HP POSITIVE DISPLACEMENT BLOWER (Outside Roof Mounted)
  - (1) ROOF MOUNTED RECEIVER CYCLONE, GRAVITY DISCHARGE
  - (1) MATERIAL LOAD-OUT HOPPER, Stand Mounted, Gravity Infeed & Outfeed
  - (1) ELECTRONIC PLATFORM WEIGH SCALE, 60" x 60" x 5000-Lb. Mettler Toledo Panther Programmable Readout
  - (1) MAIN CONTROL PANEL, Allen Bradley SLC 5-04 PLC, Eurotherm Digital Heat Controls, Melt Temperature Monitors, Torque & RPM Meters, Complete Line Interlock System, Push Button & Switch Controls
- 1 - DAVIS STANDARD 6" EXTRUDER PELLETIZING LINE INCLUDING:
  - (1) MESA EQUIPMENT 10-HP VACUUM PUMP, S/N NA, Sutorbilt Model GACMDPA Vacuum/Blower (Outside by Silos)
  - (1) MAC RECEIVER FILTER HOPPER, S/N NA, Vacuum Fed, Top Pneumatic Manifold, Filter Bags, Hopper Vibrator, Pneumatic Knife Gate Discharge
  - (1) SCHENCK ACCU RATE AUGER FEEDER, With Programmable Feed Rate Control
  - (1) SCHENCK ACCU RATE COLORANT ADDITIVE FEEDER, With Programmable Feed Rate Control
  - (1) DAVIS STANDARD THERMATIC MODEL 60IN60TP1H 6" SINGLE SCREW EXTRUDER, S/N U3920 (1997), 300-HP DC Drive Motor, 16' Screw Length, Electric Band Heaters, Liquid Cooled, With Heat Exchanger, 17.21:1 Gearbox Ratio, Closed Loop Oil Cooled Gearbox, With Water Cooled Heat Exchanger, Reliance Electric Soft Start Drive, 330 KVA Isolation Transformer, Control Panel, With Ogden Digital Heat Controllers (6-Zone Barrel, 4-Zone Die Head), Solid State Temperature Control Blocks (New Barrel & Refurbished Screw 2008)
  - (1) DIE HEAD, (2) DIE PLATES, SCREEN PACKS, 21" WIDE STRAND TYPE HEAD
  - (1) WATER TROUGH TABLE, Stainless Steel, 10' Long x 24" Wide x 12" High, Closed Loop Cooling Water Recirculation System, With Transfer Pump, Caster Mounted
  - (1) BERINGER AIR WIPE DRYER, WITH VACUUM TURBINE, S/N 12D339 (1998)
  - (1) CONAIR JETRO MODEL 212 PELLETIZER, S/N 8-120389, 15-HP, 12" Rotor Blades
  - (1) AIR BED DRYER, VACUUM RECEIVER HOPPER, 21-1/2" x 5' Bed Size, W&P 15 KW Blower, Outside Fines Collector Silo
  - (1) MAC MODEL 560 PKG 7.5-HP VACUUM PUMP, S/N 51925-001-1, Sutorbilt Model GACMDPA Vacuum/Blower (Outside)
  - (1) SWECO VIBRO-ENERGY MODEL XS48S88 48" VIBRATORY SEPARATOR/SIZER, S/N 649633-A197, 2-1/2-HP, 2 Screen Decks, Stainless Steel, 1/4" Top Screen Holes, 10mm Wire Mesh Fines Screen
  - (1) WHITLOCK 7.5-HP VACUUM POWER UNIT, S/N 8631181
  - (1) MATERIAL LOAD-OUT RECEIVING HOPPER, Vacuum Feed, Gravity Discharge, Stand Mounted
  - (1) ST REGIS MODEL 106FGS BAGGER, S/N 832003, Mechanical, Off-Line Retractable
  - (1) INSCALE MODEL D-44-1-5K ELECTRONIC PLATFORM WEIGHT SCALE, S/N 19545, 48" x 48" x 5000-Lb. Programmable Readout



# MIXING LINES • CONTROL SYSTEM • SUPER SACK UNLOAD STATIONS



TECHNICAL PROCESS & ENGINEERING FREE ROTOR EXTENDED CONTINUOUS MIXER & 6" EXTRUDER PELLETIZING LINE



BERLYN 6" SINGLE SCREW EXTRUDER



MAC SUPER SACK UNLOAD STATIONS



#4 MAC MODEL 19FRBC14 FILTER HOPPER



LITTLEFORD MIXING LINE WORK TANK HOPPERS & FILTERS



METTLER TOLEDO 48" X 48" X 5000-LB. ELECTRONIC WEIGH SCALE



LITTLEFORD MIX LINE HOT OIL HEATER



MAC COMPUTERIZED CONTROL ROOM SYSTEM

## EXTRUDER PELLETIZING LINES

*Lines may be sold bulk subject to the piecemeal bids*

- 1 - TECHNICAL PROCESS & ENGINEERING SIZE 4 FREE ROTOR EXTENDED CONTINUOUS MIXER & 6" EXTRUDER PELLETIZING LINE (4FRE LINE), INCLUDING:
  - (1) K-TRAN MODEL K4G 3-COMPONENT BLENDER/FEEDER SYSTEM, (New 2008), Programmable Touch Screen Control, With 16 Feeder Capacity, (2) Stainless Steel Pellet Feeder Hoppers Each With Load Cell Scales, Premier Vacuum Loader/Filter System & Pneumatic Knife Gate Discharge, (1) Stainless Steel Blend Feeder, With Premier Vacuum Loader/Filter System, Load Cell Auger & Load Cell Pan Scale, System Mounted on Trolley Retractable Framework System
  - (1) WATSON MARLOW MODEL 520U PROGRAMMABLE OIL ADDITIVE PUMP
  - (1) T.P. & E SIZE 4 MODEL 4FREIL FREE ROTOR EXTENDED CONTINUOUS TWIN SCREW MIXER, S/N 98A150-M (1996), 200-HP DC Motor, With GE DV300 Soft Start Drive (Refurbished 2008), #7 Screw Size, 48" Screw Length, Electric Band Heat, Water Cooled, Air Gate Ribbon Feeder Discharge, 220 KVA Isolation Transformer
  - (1) T.P. & E MODEL 60PEIL 6" SINGLE SCREW EXTRUDER, S/N 98A150-E, 200-HP DC Drive Motor, With GE DV300 Soft Start Drive, 6" Screw Length, Die Head, Electric Band Heat, Water Cooled, 220 KVA Isolation Transformer
  - (1) MIXER/EXTRUDER CONTROL CABINET, Each, With 2-Zone Digital Heat Controls, Motor Load & Screw Speed Meters, Push Button Controls
  - (1) GALA UNDERWATER PELLETIZER SYSTEM, Extruder Die Head Mounted Wet Box Cutting Chamber, With Pressurized Water Upflow Discharge, 15-HP Motorized Cutting Head on Retractable Stand, Model 2016-DW Separator/Dryer, S/N 982338, Model 140 GPM TWS Hot Water Recirculation Tank, 250-Gallon Stainless Steel Tank, With Watlow Electric Heaters, Pelletizer System Control Cabinet, Water Recirculation System, With Pump & Heat Exchanger
  - (1) SWECO MODEL US48-C66 VIBRO-ENERGY 48" VIBRATORY SEPARATOR/SIZER, S/N US48-5-81-52, Single Deck, 1/8" Holes, Stainless Steel Screen, Carbon Steel Shell
  - (1) MATERIAL LOAD-OUT STATION, With Stand Mounted Receiving Hopper, Whitlock 7.5-HP Vacuum Power Unit, In-Ground 72" x 48" x 5000-Lb. Electronic Scale, Programmable Readout
- 1 - BERLYN 6" EXTRUDER PELLETIZER LINE, INCLUDING:
  - (1) BERLYN 6" SINGLE SCREW EXTRUDER, S/N 021C516, 300-HP DC Drive, 30:1 L/D Ratio, Lufkin Gearbox (Rebuilt 2000), 5-Zone Electric Band Heat, Liquid Cooled, Single Screw, Feed Hopper, Control Panel, Transformer
  - (1) AIR WIPE DRYER
  - (1) CONAIR PELLETIZER (Parts) NOTE: Line is Disconnected & Stored.

*Additional Extruder Pelletizing Lines are located on pages 4 & 6 of this brochure.*

## MIXING LINES

*Lines may be sold bulk subject to the piecemeal bids*

- 1 - LITTLEFORD MIXING LINE, INCLUDING:
  - (2) MAC MODEL 5 X 1 WORK TANKS, S/Ns 97-296-002, NA, Each, With Colt-On Systems Model 54AVS16-111 Dust Collector/Filter System (Coarse Filter & Fine Filter), Gravity Drop, With Airlock Valves & Pneumatic Knife Gates
  - (1) MAC MODEL 5 X 1 WORK TANK, S/N NA, Gravity Drop, With Airlock Valve & Pneumatic Knife Gate
  - (1) MAC LEAD ADDITIVE WORK TANK, With Filter System (Not In Use)
  - (1) MAIN FRAME LOAD CELL WEIGH SCALE STATION FOR OILS & RESINS
  - (1) STAND-ALONE FILLER LOAD CELL SCALE HOPPER
  - (1) OIL TANK, With Regulated Fill Valves
  - (1) LITTLEFORD MODEL K-1200 HEAT MIXER, S/N 405593-3165, 30-HP, Oil Heated, Jacketed, 30" Diameter x 8' Length Stainless Steel Horizontal Mixing Chamber, Automated, Bottom Center Discharge, With Pneumatic Drop Gate
  - (1) HEAT INC. MODEL 550 HEAT MIXER OIL HEATER, S/N 2540, 100 KW
  - (1) LITTLEFORD MODEL K-1200 COOLER, S/N NA, 30-HP Paddle Drive, Water Cooled, Jacketed, 30" Diameter x 8' Length Stainless Steel Chamber, Automated, Bottom Center Discharge, With Pneumatic Drop Gate
  - (1) METTLER TOLEDO 48" X 48" X 5000-LB. ELECTRONIC WEIGH SCALE, With Programmable Readout
- 1 - MTI MIXING LINE, INCLUDING:
  - (3) MAC MODEL 5 X 1 WORK HOPPER TANKS, S/Ns NA, Gravity Drop, With Airlock Valves & Pneumatic Knife Gates, Colt-On Systems Dust Collectors/Filters
  - (1) MAC MODEL 5 X 1 WORK HOPPER TANK, S/N NA, Gravity Drop, With Airlock Valve & Pneumatic Knife Gate
  - (1) LEAD HOPPER/FILTER, With 10-HP Vacuum Blower (Not In Use)
  - (1) MAC CLAY ADDITIVE WORK HOPPER TANK, With Filter Bag Collector
  - (4) AUGER FEEDER STATIONS
  - (1) LOAD CELL WEIGH SCALE HOPPER, Approximately 1000-Lb. Rating, With Air Bladder, Pneumatic Knife Gate Discharge
  - (1) RESIN LOAD CELL SCALE HOPPER, With (2) Rotary Airlock Fill Valves, Air Knife Gates
  - (1) PLASTISIZER FLUID WEIGH SCALE HOPPER, With Oil Fill Valves
  - (1) MTI MODEL M850S/K3300 HEAT MIXER, S/N 1247 (1997), 300-HP, Vertical Stainless Steel Mixing Chamber, Top Fill, Safetronics Solid State Soft Start Motor Control
  - (1) MTI COOLER, S/N 1247 (1997), 4' x 10' Paddle Blade Chamber, Jacketed, Process Water Cooled, Air Lock Chamber Door, Bottom Discharge, With Air Gate
- 1 - MTI LINE MATERIAL TRANSFER SYSTEM, 4 HOPPER SYSTEM, INCLUDING:
  - (1) #1 PIT MOUNTED RECEIVING HOPPER, Underneath Cooler; Cone Bottom, With Vacuum Port
  - (1) #2 MAC MODEL 19FRBC14 FILTER HOPPER, S/N 97-FRBF-09-001, Vacuum Fed, Top Pneumatic Manifold, Filter Bags, Hopper Vibrator, Rotary Airlock Discharge Valve (Roof Mounted)
  - (1) #3 MAC HOLDING/RECEIVING HOPPER, Stand Mounted, Gravity Airlock Fed, Bottom Vacuum Discharge, Bin Vibrator
  - (1) #4 MAC MODEL 19FRBC14 FILTER HOPPER, S/N 98-FRBF-01-005, Vacuum Fed, Top Pneumatic Manifold, Filter Bags, Hopper Vibrator, Rotary Air Lock, Discharge Valve, (Roof Mounted)
  - (1) #1 TO #2 VACUUM TRANSFER PUMP; Sutorbilt Type 5MP Model GAEMDPA 15-HP Vacuum/Blower Pump, S/N S203362 (Outside on Chiller Pad)
  - (1) #3 TO #4 VACUUM TRANSFER PUMP; Sutorbilt Type 4MP Model GACMDPA 15-HP Vacuum/Blower Pump, S/N S225831, (Outside on Chiller Pad)

## MIXER LINES MASTER CONTROL SYSTEM

- 1 - MAC COMPUTERIZED CONTROL ROOM SYSTEM (NEW 1997), OPERATED ON WONDERWARE TRADEMARKED/LICENSED OPERATING SOFTWARE (CUSTOMER LICENSING/SUBSCRIPTION REQUIRED)
- MTI SIDE, With Allen Bradley SLC-500 PLC, Load Cell Scale Controllers, Temperature Monitors, Chart Recorder
- LITTLEFORD SIDE, With Allen Bradley SLC-5/04 PLC, Load Cell Scale Controllers, Temperature Monitors, Motor Control Panel
- PC CONTROL UNIT, With Display Monitors, (3) On-Floor Operators Stations

## BULK MATERIAL STORAGE

- 2 - DRY RESIN MATERIAL STORAGE SILOS, Welded Carbon Steel, 14' Diameter x 60' High, Top Forced Air Gravity Fed, Cone Bottom Discharge, With Rotary Air Lock Valve
- 1 - COLT-ON SYSTEMS SILO LOADING BLOWER, With Schwitzer Model C466-81 25-HP Positive Displacement Blower, S/N 423/4012
- 8 - PLASTISIZER OIL STORAGE TANKS, Welded Carbon Steel, 12' Diameter x 15' High, Each With Viking Model KK32V 1-1/2-HP 2" Dispensing Pump

## SUPER SACK UNLOAD STATIONS

- 2 - MAC SUPER SACK UNLOAD STATIONS, Each With Self-Contained Dust Collector, Gravity Drop, With Rotary Air Lock Valve (Coarse & Fine Stations)
- 1 - MAC SUPER SACK VACUUM UNLOAD STATION, Self-Contained Dust Collector
- 1 - BAG RESIN UNLOAD STATION, Manual Load 50-Lb. Bags, Unload Table, Gravity Drop Hopper, With Rotary Air Lock Valve (M-Grade Station)
- 1 - SUPER SACK CLAY UNLOAD STATION, Gravity Drop Hopper, With Vacuum Port
- 1 - MAC MODEL 1LFB-5 25-HP SUPER SACK CLAY FEEDER VACUUM PUMP, S/N 99INLF91001, Schwitzer Duro Flow Vacuum/Blower Pump (Outside on Chiller Pad)
- 1 - COARSE, FINE, & M-GRADE STATIONS SHARED BLOWER SYSTEM, Gardner Denver Dura Flow Model CGDCABA 25-HP Vacuum/Blower Pump, S/N U12431, (Outside on Transformer Pad)





VIEW OF HYSTER FORKLIFTS TO 4750-LB. CAPACITY



INGERSOLL RAND SSR-EP50SE 50-HP ROTARY SCREW AIR COMPRESSOR

## GRANULATORS

- 1 - WORTEX MODEL JC-10L GRANULATOR, S/N F-1383, Opening Size 10" x 20", Screen Holes 3/8", Blade Size 3 - 12
- 1 - NELMOR MODEL G1215P1 GRANULATOR, S/N 92-02-31413, 15-HP, 12" x 15" Opening

## PROCESS COOLING WATER EQUIPMENT

- 1 - TRANE MODEL CGAEC604AEA1FGTWRH 60-TON CHILLER, S/N J97G60252 (1997)
- 1 - TRANE MODEL CGAEC804RANJ42FGRWM 80-TON CHILLER, S/N J90B70602 (1990)
- 1 - PROCESS COOLING WATER RECIRCULATION SYSTEM, Closed Loop System, (2) 10-HP & (1) 1-1/2-HP Recirculation Pumps, 2' x 5' x 10' High Water Holding Tank, Armstrong Model PEX8, 10" x 12" x 24" Plate Type Heat Exchanger, Kinetico Water Softening System

## COMPRESSED AIR EQUIPMENT

- 1 - INGERSOLL RAND MODEL SSR-EP50SE 50-HP ROTARY SCREW AIR COMPRESSOR, S/N G1095U92344, 198 SCFM, 125 PSIG, Air Cooled, Sound Enclosure Panels
- 1 - GARDNER DENVER MODEL RNC 250A3 REFRIGERATED COMPRESSED AIR DRYER, S/N RG0J0250A0BA2NK06058, 250 SCFM @ 100 PSIG @ 100 Degree Fahrenheit

## FORKLIFTS

- 2 - HYSTER S50XL 4750-LB. CAPACITY FORKLIFTS, S/Ns C187V15888S, C187V15911S, LPG, Solid Tires, 189" Lift, 3-Stage Mast, Side Shift
- 1 - HYSTER S35XM 3300-LB. CAPACITY FORKLIFT, S/N C010H03792U, LPG, Solid Tires, 189" Lift, 3-Stage Mast, Side Shift
- 1 - RAYMOND MODEL EASI-R30TN 3000-LB. CAPACITY STAND-UP RIDER ELECTRIC FORKLIFT, S/N ET-D-00-10020 (2000), 134" Lift, Reach Type Forks, Side Shift, 24 Volt, With GNB FLX200 Industrial Battery Charger
- 1 - CROWN MODEL 35RCTT 2950-LB. CAPACITY STAND-UP RIDER ELECTRIC FORKLIFT, S/N W-92992 (Not In Service)

## MATERIAL HANDLING

- 1 - NATIONAL BULK EQUIPMENT HYDRAULIC CARTON DUMPER, S/N NA, Standard Gaylord Carton Size, Self-Contained Hydraulics
- 28 - SECTIONS 80" WIDE X 48" DEEP X 12' HIGH ADJUSTABLE PALLET RACKING, Tear-Drop Uprights, 2 Tier Cross-Beams
- 60 - ROPAK 45" X 48" X 28" HIGH COLLAPSABLE SIDE POLY SKID BOXES
- 25 - 45" X 48" POLY TRANSPORT DUNNAGE PALLET (Sides Removed)
- 25 - PORTABLE STACKABLE STEEL FLOW-BIN TOTES, Sizes to 45" x 45" x 48" High

## LAB EQUIPMENT

- 1 - FARREL 12" X 6" X 6" 2-ROLL LAB MILL, S/N 52093, 7-1/2-HP, Oil Heated Rolls, Hot Oil Heating Unit
  - 1 - BRABENDER TYPE IND/EXTR/16-04-000 INDEPENDENT LAB EXTRUDER, S/N 1028/1, 3-Zone Digital Heat
  - 1 - DYNISCO POLYMER TEST LMI 4000 SERIES PROGRAMMABLE MELT INDEX TESTER, S/N NA
  - 1 - ADMET PROGRAMMABLE TENSILE TESTER, S/N NA
  - 1 - MACBETH SPECTRA LIGHT II COLOR TEST BOOTH, S/N NA, 36" x 22"
  - 1 - CARVER MODEL C SAMPLE LABORATORY PRESS, S/N 2112-9, 6" x 6" Platen, Hand Hydraulic Jack
- MISCELLANEOUS LAB EQUIPMENT INCLUDING, Scales, Heaters, Hot Plates, Stirrers, Cabinets, Lab Benches, etc.

## MISCELLANEOUS EQUIPMENT

- 1 - 2 FLOOR HYDRAULIC PLATFORM SERVICE ELEVATOR, Services Littleford & MTI Mixing Lines Upper Decks
- 1 - MIMA MODEL LG208 PALLET SHRINK WRAP MACHINE, S/N LG208-0564
- 2 - INTERMEC MODEL 3400 LABEL PRINTERS
- 2 - INTERMEC EASY CODER 3400e & PD41 LABEL PRINTERS

## AUTOMOBILE

- 1 - 2003 DODGE INTREPID SE 4-DOOR SEDAN, VIN: 2B3HD46R83H548415, Power Windows, Power Locks, Power Steering, Air Conditioning, Cruise, 84,000 Miles

## MISCELLANEOUS SHOP & FACTORY

- (1) Jesco 1-1/2 Cu. Yd. Self-Dumping Hopper, (1) Forklift "Man Basket" Attachment, (6) Rolling Step Ladders - (1) 10', (1) 9', (1) 7', (1) 5', (2) 3', (1) Spring-Type Lift Manual Turntable, Miscellaneous Electronic Scales, Workbenches, Misc. Maintenance Supplies, Spare Parts, Pallet Jack, Hand Carts, Carton Stapler

## OFFICE FURNITURE



DAVIS STANDARD GEMINI MODEL GP-140-MM LINE #2



CINCINNATI MILACRON MODEL CM 92 HP LINE #6



CINCINNATI MILACRON MODEL TP 140-26-1 LINE #7

## EXTRUDER PELLETIZER LINES

*Lines may be sold bulk subject to the piecemeal bids*

- 1 - DAVIS STANDARD GEMINI MODEL GP-140-MM LINE #2 INCLUDING:
  - (1) 140mm (5.5") PARALLEL TWIN SCREW EXTRUDER, S/N AV030/78340 (2004), 12' Barrel Length, 200-HP Drive, Gear Ratio 31.5, Extruder RPM 30, Electric Band Heat, Motorized Additive Gate and Motorized Rotary Paddle, Console Control, With Digital Heat Controllers
  - (1) BKG MODEL COMPACT 120 UNDERWATER PELLETIZER, S/N 2004-09-44 (2004), Wet Box Cutting Chamber, 13.4 KW Cutter Head, Master 2000 Dryer System, S/N 2003-11-25, Hot Water Tank, Drying Hopper, Exhaust, Recirculation System, Console Control with Siemens Simatic PLC
  - (1) RICE LAKE 48" X 48" X 5000-LB. ELECTRONIC PLATFORM SCALE, With Programmable Readout
- 1 - CINCINNATI MILACRON MODEL TP 140-26-1 LINE #7 INCLUDING:
  - (1) 140mm TWIN SCREW EXTRUDER, S/N F10A0100015 (2000), 26: 1 L/D Ratio, 200-HP, Electric Band Heat, Liquid Cooled, 12' Barrel Length
  - (1) CONAIR TRU FEED GRAVIMETRIC FEEDER, With Programmable Control & Motorized Gate
  - (1) BKG UWG COMPACT 120 UNDERWATER PELLETIZER, S/N 2004-04-13, Wet Cutting Chamber, Motorized Cutterhead (Not in Service), Master 2000 Dryer System, S/N 2004-09-44, Hot Water Tank, Dryer, Recirculation Pumps, Filter, Console Control, With Siemens Simatic PLC
  - (1) METTLER TOLEDO 48" X 48" X 5000-LB. ELECTRONIC PLATFORM SCALE, With Programmable Readout
- 1 - CINCINNATI MILACRON MODEL CM 92 HP LINE #3 INCLUDING:
  - (1) 92 mm (3.6") CONICAL TWIN SCREW EXTRUDER, S/N E15A020008, (2000), 27.2: 1 L/D Ratio, 150-HP, 98" Barrel, Electric Band Heat, Liquid Cooled, Console Control, With Digital Heat Controllers
  - (1) CONAIR TRU FEED GRAVIMETRIC FEEDER MOTORIZED REGULATOR FEED HOPPER
  - (1) GALA UNDERWATER PELLETIZER, S/N 992165, With Wet Box Cutting Chamber, 15-HP Cutter Head, Model 140 GP Stainless Steel Hot Water Tank, Model 2016 DW Dryer, Model 160-FRU Fines Removal Sieve, Recirculation Pumps

- 1 - CINCINNATI MILACRON MODEL CM 92 HP LINE #6 INCLUDING:
  - (1) 92mm (3.6") CONICAL TWIN SCREW EXTRUDER, S/N E15A0298011 (1998), 27.2: 1 L/D Ratio, 150-HP, 98" Barrel, Electric Band Heat, Liquid Cooled, Console Control, With Digital Heat Controllers
  - (1) ACCU RATE REGULATED FEEDER
  - (1) GALA UNDERWATER PELLETIZER, S/N 982436, Wet Box Cutting Chamber, 15-HP Cutterhead, 140 CPM Electric Hot Water Polymer Heating Tank, 40" Diameter x 48" High, Stainless Steel, Model 2016 DW Dryer, FRU-160 Fines Removal Sieve, Recirculation Pumps
  - (1) 48" x 48" x 5000-LB. ELECTRONIC PLATFORM SCALE, With Mettler Toledo Prog. Readout
- 1 - CINCINNATI MILACRON MODEL CM-92-HP LINE #5 INCLUDING:
  - (1) 92mm (3.6") CONICAL TWIN SCREW EXTRUDER, S/N 4215A01/95-1 (1995), 27.2: 1 L/D Ratio, 150-HP, 98" Barrel, Electric Band Heat, Liquid Cooled, Console Control, With Digital Heat Controllers
  - (1) GALA UNDERWATER PELLETIZER, S/N 952239, Wet Box Cutting Chamber, Motorized Cutter Head, 80/TWS Hot Water Polymer Heating Tank, 31" x 31" Stainless Steel Tank, Model B-2BF Dryer, FRS-160 Fines Removal Sieve, Recirculation Pumps
- 1 - CINCINNATI MILACRON MODEL CM-92-HP LINE #4 INCLUDING:
  - (1) 92mm (3.6") CONICAL TWIN SCREW EXTRUDER, S/N 4215A01/94-1 (1994), 27.2: 1 L/D Ratio, 150-HP, 98" Barrel, Electric Band Heat, Liquid Cooled, Console Control, With Digital Heat Controllers
  - (1) CONAIR GRAVIMETRIC TECHNOLOGY TRU FEED GRAVIMETRIC FEEDER, With Prog. Control
  - (1) BKG UNDERWATER PELLETIZER (2004), Wet Box Cutting Chamber, UWG Compact 120 6.0 KW Cutter Head, S/N 2003-11-25, Model Master 1000 Dryer, S/N 2004-04-13, Stainless Steel, Electric Heat, Hot Water Tank, Recirculation Pump, With Filter, Exhaust Blower
  - (1) 48" x 48" x 5000-LB. ELECTRONIC PLATFORM SCALE, With Rice Lake 120 Prog. Readout

*Additional Extruder Pelletizing Lines are located on pages 2, 3 & 6 of this brochure.*





(1 OF 3) JACKETED RIBBON BLENDERS



MTI MIXING LINE INCLUDING:  
(1) PREMIER MATERIAL DELIVERY PUMP



PROCESS COOLING WATER SYSTEM

## MIXING AND BLENDING EQUIPMENT

*Line may be sold bulk subject to the piecemeal bids*

- 1 - MTI MIXING LINE INCLUDING: (1) PREMIER MATERIAL DELIVERY PUMP, With Sutorbilt Model GAEMDPA 15-HP Vacuum Pump/Blower, S/N S041193
- (1) PREMIER MATERIAL DELIVERY PUMP, With Sutorbilt Model GAEMDPA 7.5-HP Vacuum Pump/Blower, S/N S031853
- (2) PREMIER PNEUMATICS MATERIAL RECEIVING HOPPERS, Bin Level Indicators
- (2) BRABENDER MODEL FW120/600 FEEDERS, S/Ns BT19901012, BT19901011 (1999), Stainless Steel, Bin Master Model GR Electric Rotary Level Indicator
- (1) WALTON STOUT RECEIVING HOPPER, Pneumatic Pulse Jet, Cone Bottom, With Rotary Airlock Discharge
- (2) ELECTRONIC LOAD CELL WEIGH SCALE HOPPERS
- (2) SENSOR TRONICS MODEL 2010 PROGRAMMABLE WEIGHT CONTROLLERS
- (1) MTI MODEL W1000S MIXER, S/N 1314 (1998), 350-HP, 42" Diameter Stainless Steel Vertical Chamber, Vertical Shaft, Pneumatic Discharge Gate
- (1) STEEL SUPPORT SUPERSTRUCTURE
- 1 - RELIANT 400-HP VERTICAL SHAFT MIXER, S/N N/A, 48" Diameter Stainless Steel Chamber, Material Weigh Scale Bin, Oil Weigh Scale Hopper, Pneumatic Discharge Gate
- 1 - VERTICAL SHAFT MIXER, MFG'R & MODEL NA, Approximately 300-HP, 48" Diameter Stainless Steel Chamber, Material Weigh Scale Bin, Oil Weigh Scale Hopper, Pneumatic Discharge Gate
- 3 - JACKETED RIBBON BLENDERS, S/Ns 00100040613R, 03100040690NR, 03100040696NR, Stainless Steel, 4" Diameter x 7', 40-HP Gear Reduced Drive, Bottom Discharge, With Pneumatic Discharge Gate, Stand Mounted, Operators Platform
- 1 - JACKETED RIBBON BLENDER, S/N N/A, Stainless Steel, 36" Diameter x 10-1/2', Approximately 40-HP Geared Drive, Pneumatic Discharge Gate, Operators Platform
- 1 - YOUNG JACKETED RIBBON BLENDER, S/N 5337-1148-2819, Stainless Steel, 32" Diameter x 40", HP N/A, Design Pressure 15 PSI - 650 Degree Fahrenheit, Jacket and Shell Thickness 3/16", Pneumatic Discharge Valve

## PLASTIC EXTRUDER

- 1 - DAVIS STANDARD MODEL MV251N25 2-1/2" EXTRUDER, S/N AG59074694 (2002), 40-HP, 60" Barrel Length, Gear Ratio 17.26, Extruder RPM 100, Liquid Cooled, Electric Band Heat, Digital Temperature Controls, Model 1 Zone Ext. Type DSPA Die Head

## INJECTION MOLDING MACHINE

- 1 - ARBURG MODEL 221-55-250 28-TON PLASTIC INJECTION MOLDING MACHINE, S/N 148963, 2 oz. Polystyrene Shot Size, 22mm Screw Diameter, Mold Height Range 7 in. - 5.91 in., Maximum Daylight between Platens 6 in., Platen Size 7" x 7"

## GRANULATORS

- 3 - WORTEX MODEL JC-10 GRANULATORS, S/Ns 2910, 3233, 2617, Opening Size 10" x 12"

## TEMPERATURE CONTROL UNITS

- 1 - STERLCO MODEL 6016-MX TEMPERATURE CONTROL UNIT, S/N 63790
- 1 - AEC TCO-1 TEMPERATURE CONTROL UNIT, S/N 37H0363

## SEPARATORS/SIZERS

- 3 - MIDWESTERN INDUSTRIES MODEL MR6088-8-C GYRA-VIB 60" VIBRATORY SEPARATOR/SIZERS, S/Ns 0705-5023, 0905-5028, 0905-5029 3 Screen Decks, 2-1/2-HP
- 2 - THERMAL ENGINEERING MODEL TEA-48 SHAKER SCREEN 48" VIBRATORY SEPARATOR/SIZERS, S/Ns 93-1447, N/A, 2-1/2-HP, 2 Screen Decks
- 1 - THERMAL ENGINEERING 48" DIAMETER VIBRATORY SEPARATOR/SIZER, S/N N/A, 2 Screen Decks

## DUST COLLECTORS

- 1 - FILTREX MODEL C41000 CENTRAL DUST COLLECTOR, S/N F10218, Pneumatic Pulse Jet Self-Cleaning, Stand Mounted
- 1 - FREE-STANDING CENTRAL DUST COLLECTOR, MFG'R N/A, Pneumatic Pulse Jet Self-Cleaning, Bottom Discharge, With Motorized Rotary Airlock Valve



DAVIS STANDARD MV251N25  
2-1/2" EXTRUDER



ARBURG MODEL 221-55-250 28-TON  
PLASTIC INJECTION MOLDING MACHINE



FILTREX C41000 CENTRAL  
DUST COLLECTOR

## BULK MATERIAL STORAGE AND TRANSPORT EQUIPMENT

- 8 - BULK MATERIAL STORAGE SILOS, Welded Carbon Steel, 11-1/2' x 11-1/2' x Approximately 35' High, Square Design, Cone Bottom, Steel Leg Mounted
- 2 - 12' X APPROXIMATELY 40' BULK MATERIAL STORAGE SILOS
- 2 - 12' X APPROXIMATELY 30' BULK MATERIAL STORAGE SILOS
- 1 - CHICAGO CONVEYOR CORP. BULK MATERIAL VACUUM UNLOADING/CONVEYING SYSTEM, S.O. NO.10985, 50-HP Pressure Blower, With Air Cooled Heat Exchanger, 40-HP Vacuum Blower, With Filter, Stainless Steel Receiver Filter, 4' x Approximately 15' High, Rotary Airlock Discharge, Pneumatic Pulse Jet, Bin Level Indicators
- 1 - DOVER MODEL VPS-5 VACUUM BULK MATERIAL UNLOADER SYSTEM, S/N D-1314, Roots Model 412-Roots-Flo 50-HP Rotary Lobe Blower, S/N 0602922411, Skid Base, Pneumatic Filter Tank
- 1 - CYCLONAIRE PORTABLE VACUUM UNLOADER SYSTEM FILTER UNIT, S/N N/A
- 1 - BULK MATERIAL UNLOADER, 100-HP Pump/Blower, MFG'R N/A
- 1 - WALTON STOUT VACUUM SYSTEM, With Gardner Denver Dura Flow Model GGDCADA, 30-HP Pump/Blower
- 1 - VACUUM PUMP SYSTEM, ROOTS/DRESSER 40-HP ROTARY LOBE BLOWER, S/N 931-2750
- 1 - SPENCER 5-HP VACUUM PUMP BLOWER, S/N N/A
- 1 - DRESSER 93-2703 50-HP VACUUM PUMP/BLOWER, S/N N/A

## BULK BAG EQUIPMENT

- 2 - CONTROL & METERING MODEL FEF-S DISCHARGE BULK BAG METERING DISCHARGE STANDS, S/Ns C3782, C3791 (1999), Receiving Hopper, With Pneumatic Discharge Gate, Stand Mounted
- 1 - CONTROL & METERING MODEL FL-F DISCHARGER BULK BAG DUMP STAND, S/N C1559, 45" x 45" Hopper, With Vibco Electric Vibrator
- 1 - HAPMAN 42" X 28" DOWNDRAFT BAG BOOTH, S/N AB-3240, Closure Lid, Exhaust Blower

## PROCESS COOLING WATER EQUIPMENT

- 1 - TRANE MODEL CGWD0504CJQHAT101FFOUG 50-TON CHILLER, S/N U96E04424 (1996), 15/10/10/10 Nominal HP/Ton Rating, (2) 1800 Gallon Poly Holding Tanks, Whitlock Control Panel, Recirculation Pumps
- 1 - PROCESS COOLING WATER SYSTEM, With (2) Approximate 3000-Gallon Poly Holding Tanks, Each With (2) 10-HP Recirculation Pumps, Heat Exchanger, Filter Tech Model LGF4-480 Filter, S/N 041272121, 50" Wide Paper Media
- 1 - EMERALD MODEL 556 PROCESS COOLING WATER UNIT, S/N 039, 72" x 72" x 60" Open Top Holding Tank, (2) 10-HP Recirculation Pumps

## COMPRESSED AIR EQUIPMENT

- 1 - SULLAIR V-120-50 H/A 50-HP ROTARY SCREW AIR COMPRESSOR, S/N 003-139764, Air Cooled, Sound Enclosure Panels
- 2 - SULLAIR MODEL LS-10 40-HP ROTARY SCREW AIR COMPRESSORS, S/Ns N/A, Air Cooled, Skid Base, Aftercooler
- 1 - SULLAIR SR-250 REFRIGERATED COMPRESSED AIR DRYER, S/N 2899050004
- 1 - CURTIS DRI-PLUS SYSTEMS CDP-8200 REFRIGERATED COMPRESSED AIR DRYER, S/N 0325-A-102A-9811-9N, 200 SCFM Capacity
- 1 - 36" DIAMETER X 8' HIGH VERTICAL COMPRESSED AIR RECEIVER TANK

## LAB EQUIPMENT

- 1 - LITTLEFORD MODEL N/A LAB MIXER, S/N N/A, 9" x 9" Stainless Steel Mixing Chamber, AC Drive Motor, With Load Percent Meter
- 1 - FARREL 12" X 6" X 6" 2-ROLL LAB MILL, S/N 57A1263, Liquid Temperature Regulated Rolls
- 1 - MFG'R NA, 12" x 6" x 6" 2-ROLL LAB MILL, S/N N/A
- 1 - WABASH 50-1512-2T2WSM 50-TON HYDRAULIC LAB COMPRESSION PRESS, S/N 8824, Compression Cylinder 7 x 12, Platen Size 15"LR x 12"FB, Electric Platen Heat, Upacting, Self-Contained Hydraulics
- 1 - C.W. BRABENDER PLASTI-CORDER TYPE DR-2051 LAB EXTRUDER, S/N 0328XXPE, 5-HP AC Drive, PL2100 Digital Temperature Control Panel, With Power Supply
- 1 - LLOYD INSTRUMENTS MODEL LRX5K COMPUTERIZED TENSILE STRENGTH TESTER, TYPE TG18, S/N W090979802, 5KN Maximum Load, 36" Vertical Travel, Programmable Readout, PC Control
- 1 - TMI MODEL 43-02-01-0001 PROGRAMMABLE IMPACT TESTER, S/N 27819-01, Programmable Monitor
- 1 - QUV MODEL QUV/SPRAY ACCELERATED WEATHERING TESTER, S/N N/A, Programmable, Solar Eye UV Irradiance Controller
- 1 - GRETAG MACBETH MODEL COLOR EYE 7000A COLOR ANALYZER, S/N 37102450447, PC Control
- 1 - FISCHER SCIENTIFIC MODEL 655F ELECTRIC LAB OVEN, S/N 20900260, 24" x 18" x 20"
- 1 - AMINCO LAB MATERIAL HEATER, S/N N/A
- 1 - GARDNER IMPACT TESTER, S/N N/A

Lab Equipment Including, Lab Hood, Benches, Cabinets, Scales, Lab Mixers, Hot Plates, Sieve Shaker, Microscope, Lab Ware



# FORKLIFTS • MISC. EQUIPMENT • EXTRUDER PELLETIZING LINES



**to 5,000-LB.**

VIEW OF CATERPILLAR, CLARK, CROWN & DAEWOO ELECTRIC FORKLIFTS

## FORKLIFTS

- 1 - CATERPILLAR MODEL GP25K 4400-LB. CAPACITY FORKLIFT, S/N AT17B-11974, LPG, Solid Tires, 188" Lift, Side Shift
- 3 - CATERPILLAR MODEL 2EC25E 5000-LB. CAPACITY SIT-DOWN RIDER ELECTRIC FORKLIFTS, S/Ns A2EC263252, A2EC363091, A2EC363099, 188" Lift, Side Shift, 36" Forks, 36 Volt
- 3 - CLARK MODEL ECG25 4800-LB. CAPACITY SIT-DOWN RIDER ELECTRIC FORKLIFTS, S/Ns ECG358-0204-6809FB, ECG358-0095-6751FB, ECG358-0084-6789FB
- 1 - CROWN 4000-LB. CAPACITY SIT-DOWN RIDER ELECTRIC FORKLIFT, S/N 1A146844, 188" Lift
- 1 - DAEWOO MODEL 8C20S 4000-LB. CAPACITY SIT-DOWN RIDER ELECTRIC FORKLIFT, S/N 27-0036, (No Battery)
- 1 - CROWN 3700-LB. CAPACITY SIT-DOWN RIDER ELECTRIC FORKLIFT, S/N 1A145432, 188" Lift, Side Shift, 36" Forks, 36 Volt
- 2 - YUASA MODEL TGN-18-1050 36 VOLT INDUSTRIAL FORKLIFT BATTERY CHARGERS, S/Ns WD 88788, WI 96820
- 1 - MAC QUANTUM SERIES MODEL 18Q105002A 36 VOLT INDUSTRIAL FORKLIFT BATTERY CHARGER, S/N 99225679
- 1 - MAC QUANTUM SERIES MODEL 18Q970C2A 36 VOLT INDUSTRIAL FORKLIFT BATTERY CHARGER, S/N 99013481
- 1 - MAC QUANTUM SERIES MODEL 180970C2A 36 VOLT INDUSTRIAL FORKLIFT BATTERY CHARGER, S/N 99013482
- 1 - POEHLERPROZESS INDUSTRIAL FORKLIFT BATTERY CHARGER, S/N N/A
- 1 - LIFE GUARD MODEL LG18-1050F3B 36 VOLT INDUSTRIAL FORKLIFT BATTERY CHARGER, S/N 97U3958

## MATERIAL HANDLING

- 120 - JOHNSON 44" X 44" X 36" STACKABLE STEEL MATERIAL FLOW BIN TOTE BINS
- 1 - MATERIAL TRANSFER AND STORAGE HYDRAULIC CARTON TIPPER, S/N N/A, Standard Gaylord Carton Size
- 1 - IMS MODEL 111871 TUMBLER DOUBLE-END 55-GALLON DRUM TUMBLER, S/N 0904
- 1 - 48" X 48" X 5000-LB. ELECTRONIC PLATFORM SCALE, With Mettler Toledo Panther Plus Programmable Readout
- 1 - 48" X 48" X 5000-LB. ELECTRONIC PLATFORM SCALE, With Programmable Readout
- 1 - METTLER TOLEDO MODEL VLX 48" X 48" X 5000-LB. ELECTRONIC PLATFORM SCALE, S/N 1142609-1EH, With Programmable Readout
- 1 - METTLER TOLEDO 18" X 18" BENCH TOP ELECTRONIC SCALE, With Programmable Counting Scale
- 1 - AND BENCH TOP ELECTRONIC SCALE

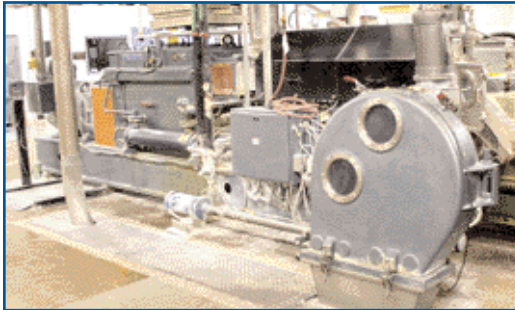
## AUTOMOBILES

- 1 - 2006 FORD TAURUS SEL 4-DOOR SEAN VIN: 1FAPP56U56A251053, With Power Windows, Power Locks, Air Conditioning, Programmable Entry Locks, Sunroof
- 1 - 2005 DODGE NEON SXT 4-DOOR SEDAN, VIN: 1B3ES56C65D110518, With Power Windows, Power Locks, Air Conditioning, (52,000 Miles)

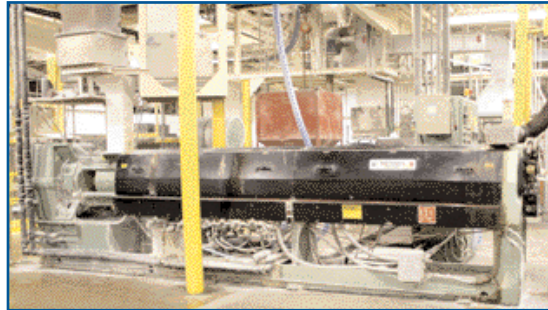
## MISCELLANEOUS EQUIPMENT

- 1 - RIDGID MODEL 700 HAND HELD POWER PIPE THREADER, S/N EE16294-0603
  - 2 - DEWALT MODEL DW 304P ELECTRIC RECIPROCATING SAWS
  - 1 - DEWALT MODEL DW 290 1/2" DRIVE ELECTRIC IMPACT WRENCH
  - 1 - BOSCH BULLDOG 11224 VSR ELECTRIC HAMMER DRILL
  - 1 - DEWALT DW 239 1/2" ELECTRIC DRILL MOTOR
  - 1 - HYDRAULIC PORT-A-POWER KIT
  - 1 - HITACHI MODEL C10 FS 10" SLIDING COMPOUND MITRE SAW
  - 1 - CLAUSING 15" DRILL PRESS
  - 1 - CRAFTSMAN 6" DOUBLE-END GRINDER
  - 1 - FAMCO No. 3-1/2 R ARBOR PRESS
  - 1 - MAKITA 2414NB 14" ABRASIVE CUT-OFF SAW
  - 1 - REPUBLIC 14" X 40" ENGINE LATHE
  - 1 - MILLPORT 2-HP 16-SPEED VERTICAL MILLING MACHINE
  - 1 - 6" X 12" HAND FEED SURFACE GRINDER
- Gang Box, Welding Table, Welding Screens, Step Ladders, Maintenance and Repair Parts, Spare Equipment Parts, Motors, Pumps, Blowers, Hoppers, etc.

## OFFICE FURNITURE & EQUIPMENT



WERNER & PFLEIDERER ZSK-92 (3.6") TWIN SCREW EXTRUDER



DAVIS STANDARD THERMATIC 60IN60TPIH 6" EXTRUDER



CONAIR JETRO MODEL 212, 12" 15-HP DRY TYPE PELLETIZER

## EXTRUDER PELLETIZING LINES

*Lines may be sold bulk subject to the piecemeal bids*

- 1 - WERNER & PFLEIDERER EXTRUDER PELLETIZING LINE, INCLUDING:
  - (1) MAC 464A/6MVLBHC 15-HP MATERIAL TRANSFER VACUUM/BLOWER, S/N 9-PD6V-02-003
  - (1) MAC VACUUM RECEIVER/FILTER HOPPER, Vacuum Fed, Gravity Discharge, With Air Knife Gate, Indicator Level Indicators, Vibrators, Filter Bags, Top Air Manifold
  - (1) SCHENCK ACCU RATE ELECTRONIC WEIGH SCALE PROGRAMMABLE FEEDER HOPPER
  - (1) SCHENCK ACCU RATE PROGRAMMABLE COLOR ADDITIVE AUGER FEEDER
  - (1) SCHENCK ACCU RATE PROGRAMMABLE REGRIND ADDITIVE AUGER FEEDER, With Foremost Vacuum Loader
  - (1) SCHENCK ACCU RATE MAIN CONTROL PANEL, With Dry Blend, Color, & Blend Prog. Controllers
  - (1) WERNER & PFLEIDERER MODEL ZSK-92 (3.6") TWIN SCREW EXTRUDER, S/N 180770 (1994), 60" Barrel Length, 400-HP DC Drive, Electric Bank Heat, Liquid Cooled, Control Panel
  - (1) VACUUM ASSIT TRANSFER BOX DISCHARGE, With Vacuum Power Unit
  - (1) W&P MODEL ESA-200, 200mm (7.8") SINGLE SCREW CROSS EXTRUDER, S/N 108770 (1994), 48" Barrel Length, HP NA, Liquid Cooled, Electric Band Heat/Hot Oil Heated Hollow Screw
  - (1) EXTRUSION SPECIALTY PRODUCTS MODEL SA-2/20 HOT OIL HEATER, S/N 01043, 20 Kw
  - (1) HOT FACE CUTTER PELLETIZER, 30" Diameter 2 Blade Cutter Head, Gravity Drop Discharge
  - (1) MATERIAL TRANSFER POSITIVE DISPLACEMENT BLOWER, HP NA, 6" M-Floor Piping
  - (1) MATERIAL TRANSFER ASSIST POSITIVE DISPLACEMENT BLOWER FOR VERTICAL TRANSFER
  - (1) WERNER & PFLEIDERER MODEL GFC 230X45, 90.5" X 17.7" AIR BED DRYER, S/N 507823 (1993), Forced Air Blower (HP NA)
  - (1) SWECO VIBRO ENERGY 48" VIBRATORY SEPARATOR/SIZER, S/N NA, (2) Sizing Screen Decks, Solid Inner/Outer Ring Top Screen
  - (1) MATERIAL TRANSFER POSITIVE DISPLACEMENT BLOWER, HP NA
  - (1) MATERIAL LOAD-OUT STAND, With Receiving Cyclone, Gravity Drop, Holding Hopper, Super Sack Filler Framework or Gaylord Box Load
  - (1) TOLEDO 60" X 60" X 5000-LB. ELECTRONIC PLATFORM WEIGH SCALE, With Programmable Readout

- 1 - DAVIS STANDARD EXTRUDER PELLETIZING LINE INCLUDING:
  - (1) 15-HP VACUUM PUMP/BLOWER PNEUMATIC CONVEYING POWER UNIT
  - (1) MAC VACUUM RECEIVER/FILTER HOPPER, Vacuum Fed, Cone Bottom Discharge, With Air Knife Gate, Filter Bags, Top Air Manifold
  - (1) ACCU RATE DRY MATERIAL FEEDER, Electronic Weigh Hopper Receiver/Feeder
  - (2) ACCU RATE ADDITIVE AUGER FEEDERS, (1) Color, (1) Regrind
  - (1) ACCU RATE MASTER CONTROL PANEL, With Schenck Disocont Programmable Controls
  - (1) DAVIS STANDARD THERMATIC MODEL 60IN60TPIH 6" EXTRUDER, S/N L-9918 (1991), 30:1 L/D Ratio, 15" Barrel Length, 300-HP, Electric Band Heat, Liquid Cooled, Console Control, With Eurotherm Digital Heat Controls
  - (1) EXTRUSION DIES INC. 21" WIDE STRAND TYPE DIE HEAD, Electric Heat, Off-Line Retractable
  - (1) STAINLESS STEEL WATER BATH TABLE, 10' Length x 24" Wide x 12" Deep, Caster Mounted, Connected Into Central Process Water Chill/Recirculation System
  - (1) BERINGER MODEL WS75 AIR WIPE DRYER, S/N 12D315
  - (1) CONAIR JETRO MODEL 212, 12" 15-HP DRY TYPE PELLETIZER, S/N 8-120281
  - (1) 15-HP VACUUM PUMP/BLOWER PNEUMATIC CONVEYING POWER UNIT
  - (1) WERNER & PFLEIDERER MODEL GFC 110X75, 43" X 29.5" AIR BED DRYER, S/N 230805, Vacuum Receiver Hopper, 20-HP Air Blower
  - (1) SWECO VIBRO-ENERGY MODEL LS48C66, 48" VIBRATORY SEPARATOR/SIZER, S/N C117817C, 2-1/2-HP (2) Sizing Screen Decks, Solid Inner/Outer Ring Top Screen
  - (1) 10-HP POSITIVE DISPLACEMENT TRANSFER BLOWER
  - (1) MATERIAL LOAD-OUT STATION RECEIVING CYCLONE/HOPPER, Super Structure Stand Mounted
  - (1) ST. REGIS MODEL 106-FGS BAGGER, S/N 752313, Mechanical Pre-Set Weigh Type, Off-Line Track Mounted Retractable
  - (1) METTLER TOLEDO 60" X 60" X 5000-LB. ELECTRONIC PLATFORM WEIGH-OUT SCALE, With Programmable Readout

*Additional Extruder Pelletizing Lines are located on pages 2, 3 & 4 of this brochure.*



# MIXING/BLENDING • BULK STORAGE • MATERIAL HANDLING



VIEW OF MTI MIXER LINE



MTI MIXER LINE MAC  
RECEIVER/FILTER HOPPERS



BULK STORAGE SILOS & MAC 40-HP  
BLOWER SYSTEM



50-HP CENTRAL FINES  
DUST COLLECTION SYSTEM



LITTLEFORD 125-HP VERTICAL SHAFT MIXER



INGERSOLL RAND MODEL SSR 50-HP  
ROTARY SCREW AIR COMPRESSOR



APPLICATION ENGINEERING  
PROCESS WATER CHILLERS



VIEW OF TCM FORKLIFTS TO 5,000-LB. CAPACITY

## MIXING/BLENDING EQUIPMENT

*Line may be sold bulk subject to  
the piecemeal bids*

### 1 – MTI MIXER LINE, INCLUDING:

- (1) MAC 463-A-4506, 20-HP MATERIAL TRANSFER VACUUM PUMP/BLOWER, S/N 91-PDBV-06-004
- (1) MAC 463-A-4506, 20-HP MATERIAL TRANSFER VACUUM PUMP/BLOWER, S/N 91-PDBV-06-006
- (3) MAC RECEIVER/FILTER HOPPERS, Filter Bags, Air Manifold Pulse Jet, Stand Mounted, Electronic Bin Level Indicators, With Auger Discharge
- (1) MAC RECEIVER/FILTER HOPPER, Filter Bags, Air Manifold Pulse Jet, Stand Mounted, Electronic Bin Level Indicator, With Rotary Airlock Discharge
- (1) PLASTICIZER OIL RECEIVING LOAD CELL WEIGH HOPPER
- (3) LOAD CELL WEIGH HOPPERS, With Air Knife Gate Discharge, Vibrators, Electronic Level Indicators
- (1) MTI MODEL M750/K2400 VERTICAL SHAFT MIXER, S/N 878 (1991), 300-HP, Stainless Steel
- (1) MTI 4' X 8' HORIZONTAL SHAFT PADDLE BLADE COOLING CHAMBER, S/N 878, Jacketed, Water Cooled, Air Lock Chamber Door, Bottom Discharge, With Air Gate
- (1) PIT MOUNTED RECEIVING HOPPER, Gravity Fed, Electronic Bin Level Indicators, Vacuum Discharge
- (1) MAC MODEL 463-A-4506, 20-HP MATERIAL TRANSFER VACUUM PUMP, S/N 91-PDBV-06-005
- (1) CAMCORP 26SFRT19-3 RECEIVER/FILTER HOPPER, S/N 2463-2, Vacuum Fed, Gravity Discharge, With Rotary Airlock Valve, Filter Bags, Air Manifold Pulse Jet, 48" Diameter x 60", Electronic Bin Level Indicators, Vibrators
- (1) LK MODULAR STAINLESS STEEL RECEIVER HOPPER
- (1) 60" X 60" X 5000-LB. ELECTRONIC PLATFORM WEIGH-OUT SCALE, With Programmable Readout
- (1) CENTRAL PC CONTROL CART end Line
- 1 – LITTLEFORD 125-HP VERTICAL SHAFT MIXER, MODEL & S/N NA (Stored)
- 1 – LITTLEFORD 40" X 11" HORIZONTAL SHAFT COOLING CHAMBER, S/N 10521, 30-HP (Stored)
- 1 – HAND BATCH BLENDING STATION, With:
  - (8) Schenck Accu Rate 21" x 21" Stainless Steel Auger Feeder Hoppers, Programmable Feed Rate Controls, Electronic Weigh Scale
  - (1) Allen Bradley Versa View 1200M Central PLC Control Console, With (2) Mettler Toledo Jagxtreme Programmable Scale Controls

## BULK STORAGE/DISTRIBUTION

- 2 – 12' X 40' BULK DRY MATERIAL STORAGE SILOS, Bolted Steel Panels
- 1 – 10' X 30' BULK DRY MATERIAL STORAGE SILO, Welded Carbon Steel
- 1 – MAC 40-HP MATERIAL TRANSFER VACUUM/BLOWER SYSTEM, S/N NA
- 6 – PLASTICIZER OIL BULK STORAGE TANKS, Approximately 10' x 20', Welded Carbon Steel, Steel Leg Stand, Tapered Bottom, Each With Viking HL-4125 2-HP Pump
- 2 – PLASTICIZER OIL BULK STORAGE TANKS, Approximately 10' x 15', Welded Carbon Steel, Steel Leg Stand, Tapered Bottom, Each With Viking HL-4125 2-HP Pump
- 1 – MAC 4-STATION SUPER SACK BULK BAG RECEIVING STATION, (4) Receiving Hoppers, With Electronic Vibrators, Vacuum Unload (Connected to Common Usage Vacuum System)
- 1 – MAC MODEL 36AV8 HAND BAG DUMP BENCH, S/N 91-AVSF-06-011, Self-Contained Dust Collector, Vacuum Unload (Connected to Common Usage Vacuum System)

## MIXING/BLENDING MASTER CONTROL SYSTEM

- 1 – MAC COMPUTERIZED CONTROL ROOM SYSTEM WONDER WARE TRADEMARKED/LICENSED OPERATING SOFTWARE (Customer Licensing/Subscription Required), Control Panels, Operating Terminals, Display Monitors

## DUST COLLECTION SYSTEM

- 1 – 50-HP CENTRAL FINES DUST COLLECTION SYSTEM, Pneumatic Pulse Jet, Receiver Cyclone

## GRANULATORS

- 2 – WORTEX MODEL JC-10L GRANULATORS, S/Ns 1335, 1384, Opening Size 18" x 10"

## PROCESS COOLING WATER EQUIPMENT

- 1 – APPLICATION ENGINEERING (AEC) GLACIER SERIES MODEL NXGA-30 PROCESS WATER CHILLER, S/N 98L0402, 30-HP Compressor
- 2 – APPLICATION ENGINEERING (AEC) S-190ME-Q PROCESS WATER CHILLERS, S/Ns 89K373, 89K372, 25/10-HP
- 1 – PROCESS COOLING WATER RECIRCULATION UNIT, With Holding Tank & Pumps

## COMPRESSED AIR EQUIPMENT

- 1 – INGERSOLL RAND MODEL SSR 50-HP ROTARY SCREW AIR COMPRESSOR, S/N NA, Air Cooled, Sound Enclosure Panels
- 1 – ULTRA AIR UA-250-AC REFRIGERATED COMPRESSED AIR DRYER, S/N A00010

## MATERIAL HANDLING

- 250 – 45" x 48" x 32" HIGH COLLAPSIBLE SIDE POLY SKID BOXES
- 1 – VESTIL MFG MODEL HBD-2-48 HYDRAULIC CARTON TIPPER, S/N NA, 2000-Lb. Capacity, Standard Gaylord Carton Size
- 1 – ABELL HOWE 1/2-TON CAPACITY COLUMN MOUNTED JIB CRANE, S/N 91-28022, With Yale 1/2-Ton Electric Chain Hoist, (MTI Receiver Bin Deck)
- 20 – 40" X 40" X 30" STACKABLE FLOW BIN TOTE BINS
- Miscellaneous Pallet Racks, Hand Carts, Pallet Jacks

## FORKLIFTS

- 1 – TCM MODEL FCG25N6T 5000-LB. CAPACITY FORKLIFT, S/N A48805902, LPG, Solid Tires, 130" Lift
- 1 – TCM MODEL FCG25N6 4600-LB. CAPACITY FORKLIFT, S/N A48804150, LPG, Solid Tires, 189" Lift, 42" Forks
- 1 – TCM MODEL FCG25T7T 4600-LB. CAPACITY FORKLIFT, S/N A15G03063, LPG, Solid Tires, 189" Lift, 42" Forks

## LAB EQUIPMENT

- 1 – CARVER MODEL 4533-4D11B0C LAB PRESS, S/N 4533-011 (2007), 15" x 17" Electric Heated Platen, Auto Series Programmable Control
- 1 – KSBI 12" X 6" X 6" 2-ROLL LAB MILL, S/N 14864, Temperature Controlled Rolls, 5.5 KW
- 1 – BRABENDER PLASTI-CORDER MODEL DR-2051 LAB EXTRUDER, S/N 0287-PE, 5-HP, PL2000 Programmable Controls
- 1 – BENZ LAB STIRRER
- 2 – CARVER HYDRAULIC LAMINATING PRESSES
- 1 – SCOTT TESTER IMPACT TESTER
- Electronic Scales, Hot Plates, Labware, Benches, Cabinets

## STRAIGHT TRUCK

- 1 – 1995 INTERNATIONAL 4700 24' SINGLE AXLE VAN BODY STRAIGHT TRUCK, VIN: 1HTSCAAM9TH306274, DT466 Diesel, Fuller 6 Speed, 254" Wheel Base, 24' Morgan Aluminum Van Body

## AUTOMOBILE

- 1 – 2005 FORD TAURUS SLE 4-DOOR SEDAN, VIN: 1FAPP56UX5A152338, Power Windows, Power Locks, Air Conditioning, Programmable Entry Locks

## MISCELLANEOUS EQUIPMENT

- 1 – OTC POWER TEAM 50-TON HYDRAULIC PULLER SET, With Portable Gang Box
- 1 – MIMA MODEL LG-20 PALLET SHRINK WRAP MACHINE, S/N 13369
- Maintenance & Repair Parts, Motors, Blowers, Pumps, Hoppers, Electrical & Pneumatic Scales, Fans, Carts, General Shop & Factory

## OFFICE

Miscellaneous Office Furniture & Equipment